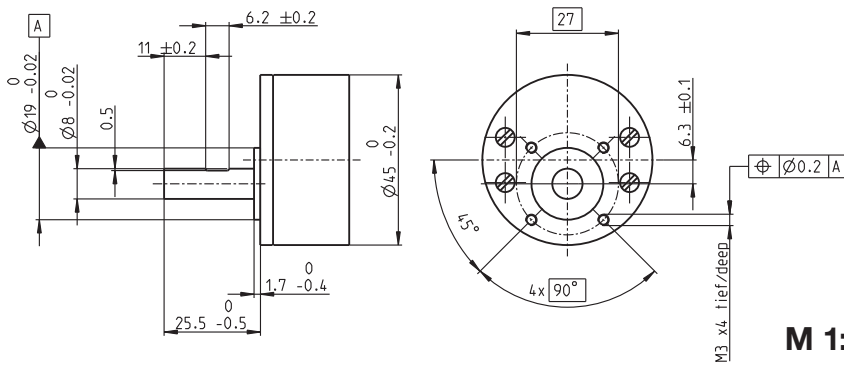


# Spur Gearhead GS 45 A Ø45 mm, 0.5–2.0 Nm



## Technical Data

Spur Gearhead	straight teeth
Output shaft	stainless steel, hardened
Bearing at output	ball bearing
Radial play, 10 mm from flange	max. 0.15 mm
Axial play	0.02–0.2 mm
Max. axial load (dynamic)	60 N
Max. force for press fits	60 N
Max. continuous input speed	6000 rpm
Recommended temperature range	-15...+80°C
Number of stages	2 3 4 5 6
Max. radial load, 10 mm from flange	120 N 180 N 190 N 190 N 190 N

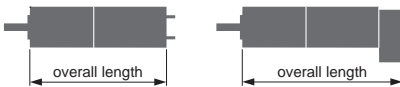
maxon gear

- Stock program
- Standard program
- Special program (on request)

## Part Numbers

	301177	301175	301181	301186	301191
<b>Gearhead Data</b>					
1 Reduction	5:1	18:1	61:1	212:1	732:1
2 Absolute reduction	51/10	459/26	20655/338	125862/595	492790/673
10 Mass inertia	gcm <sup>2</sup> 3.7	1.6	1.0	0.8	0.8
3 Max. motor shaft diameter	mm 3	3	3	3	3
<b>Part Numbers</b>	301178	301173	301182	301187	301192
1 Reduction	7:1	26:1	89:1	310:1	1072:1
2 Absolute reduction	209/28	9405/364	66632/745	183281/592	307572/287
10 Mass inertia	gcm <sup>2</sup> 3.1	1.4	1.0	0.8	0.8
3 Max. motor shaft diameter	mm 3	3	3	3	3
<b>Part Numbers</b>	301179	266595	301184	301188	301193
1 Reduction	9:1	32:1	111:1	385:1	1334:1
2 Absolute reduction	2295/247	8523/265	334/3	173809/451	198769/149
10 Mass inertia	gcm <sup>2</sup> 2.1	1.4	0.6	0.5	0.4
3 Max. motor shaft diameter	mm 3	3	3	3	3
<b>Part Numbers</b>	301180	301171	301185	301189	301194
1 Reduction	14:1	47:1	163:1	564:1	1952:1
2 Absolute reduction	2475/182	6221/132	141157/861	161860/287	1929023/988
10 Mass inertia	gcm <sup>2</sup> 2.2	0.9	0.5	0.5	0.4
3 Max. motor shaft diameter	mm 3	3	3	3	3
4 Number of stages	2	3	4	5	6
5 Max. continuous torque	Nm 0.5	2.0	2.0	2.0	2.0
6 Max. intermittent torque at gear output	Nm 0.75	2.5	2.5	2.5	2.5
12 Direction of rotation, drive to output	=	≠	=	≠	=
7 Max. efficiency	% 87	76	66	59	53
8 Weight	g 224	224	255	287	313
9 Average backlash No load	° 1.6	2.0	2.4	2.8	3.2
11 Gearhead length L1*	mm 23.5	23.5	26.9	30.4	33.8

\*for EC 45 flat, IE, L1 is max. + 4.0 mm



## maxon Modular System

+ Motor	Page	+ Sensor/Brake	Page	Overall length [mm]	= Motor length + gearhead length + (sensor/brake) + assembly parts		
EC 45 flat, 30 W	299			40.0	43.4	46.9	50.3
EC 45 flat, 30 W	299	MILE	379	43.0	43.0	46.4	53.3
EC 45 flat, 50 W	300			44.9	44.9	48.3	55.2
EC 45 flat, 50 W	300	MILE	379	46.2	46.2	49.6	56.5
EC 45 flat, 70 W	301			50.3	50.3	53.7	60.6
EC 45 flat, 70 W	301	MILE	379	52.0	52.0	55.4	62.3
EC 45 flat, IE, IP 00	302			59.2	59.2	62.6	69.5
EC 45 flat, IE, IP 40	302			61.4	61.4	64.8	71.7
EC 45 flat, IE, IP 00	303			64.2	64.2	67.6	74.5
EC 45 flat, IE, IP 40	303			66.4	66.4	69.8	76.7