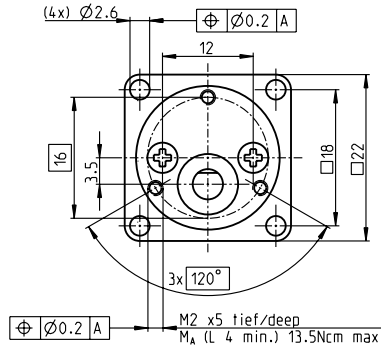
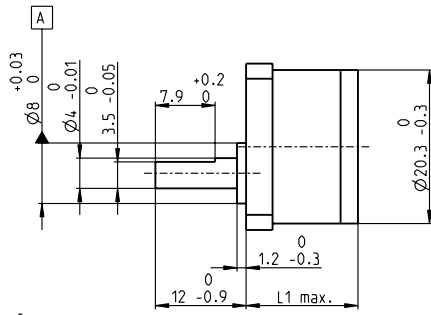


Spur Gearhead GS 20 A Ø20.3 mm, 0.06–0.25 Nm



Technical Data

Spur Gearhead	straight teeth
Output shaft	stainless steel, hardened
Bearing at output	sleeve bearing
Radial play, 6 mm from flange	max. 0.1 mm
Axial play	max. 0.3 mm
Max. axial load (dynamic)	8 N
Max. force for press fits	20 N
Max. continuous input speed	8000 rpm
Recommended temperature range	-15...+80°C
Number of stages	2 3 4 5 6
Max. radial load, 6 mm from flange	8 N 12 N 16 N 20 N 20 N

M 1:1

- Stock program
- Standard program
- Special program (on request)

Part Numbers

Part Number	258042	258044	258045	258047	258049
Gearhead Data					
1 Reduction	15:1	36:1	88:1	216:1	532:1
2 Absolute reduction	1696/117	54272/1521	1736704/19773	55574528/257049	1778384896/3341637
3 Max. motor shaft diameter	mm 2	2	2	2	2
4 Number of stages	2	3	4	5	6
5 Max. continuous torque	Nm 0.06	0.08	0.15	0.20	0.25
6 Max. intermittent torque at gear output	Nm 0.07	0.09	0.18	0.25	0.30
12 Direction of rotation, drive to output	≠	=	≠	=	≠
7 Max. efficiency	% 91	83	75	69	62
8 Weight	g 11.8	13.0	14.3	15.6	16.8
9 Average backlash no load	° 1.6	2.0	2.4	2.8	3.2
10 Mass inertia	gcm ² 0.016	0.015	0.015	0.015	0.015
11 Gearhead length L1	mm 23.6	25.8	28.1	30.3	32.6



maxon Modular System

+ Motor	Page	+ Sensor/Brake	Page	Overall length [mm] = Motor length + gearhead length + (sensor/brake) + assembly parts				
EC 20 flat, 3 W, A	291			34.1	36.3	38.6	40.8	43.1
EC 20 flat, 3 W, B	291			33.5	35.7	38.0	40.2	42.5
EC 20 flat, 5 W	292			37.7	39.9	42.2	44.4	46.7
EC 20 flat, IE, IP 00	293			40.7	42.9	45.2	47.4	49.7
EC 20 flat, IE, IP 40	293			41.8	44.0	46.3	48.5	50.8
EC 20 flat, IE, IP 00	294			44.7	46.9	49.2	51.4	53.7
EC 20 flat, IE, IP 40	294			45.8	48.0	50.3	52.5	54.8