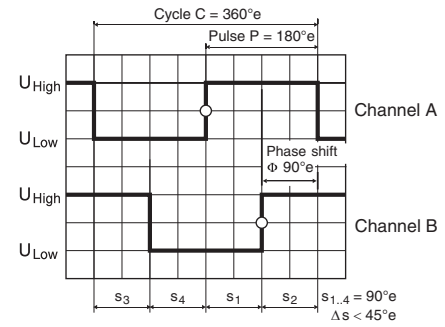
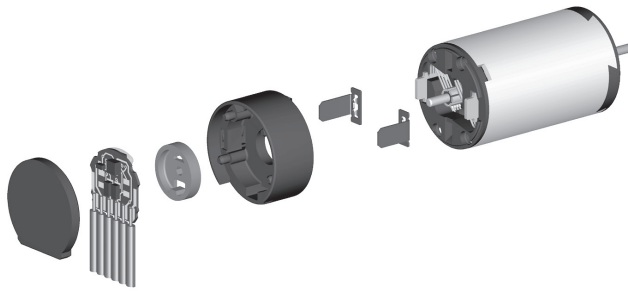


Encoder MR Type S, 64–256 CPT, 2 Channels



Direction of rotation cw (definition cw p. 150)

- Stock program
- Standard program
- Special program (on request)

Part Numbers

241057	241060	241062
--------	--------	--------

Type	241057	241060	241062
Counts per turn	64	128	256
Number of channels	2	2	2
Max. operating frequency (kHz)	80	160	320
Max. speed (rpm)	75000	75000	75000



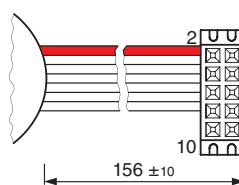
maxon Modular System

+ Motor	Page	+ Gearhead	Page	+ Brake	Page	Overall length [mm] / ● see Gearhead
RE 13, 0.75 W	160					26.3 26.3 26.3
RE 13, 0.75 W	161					28.7 28.7 28.7
RE 13, 0.75 W	161	GP 13, 0.05 - 0.15 Nm	316			● ● ●
RE 13, 0.75 W	161	GP 13, 0.2 - 0.35 Nm	317			● ● ●
RE 13, 2 W	164					38.5 38.5 38.5
RE 13, 2 W	165					40.9 40.9 40.9
RE 13, 2 W	165	GP 13, 0.05 - 0.15 Nm	316			● ● ●
RE 13, 2 W	165	GP 13, 0.2 - 0.35 Nm	317			● ● ●
RE 13, 1.5 W	168					28.4 28.4 28.4
RE 13, 1.5 W	169					30.8 30.8 30.8
RE 13, 1.5 W	169	GP 13, 0.05 - 0.15 Nm	316			● ● ●
RE 13, 1.5 W	169	GP 13, 0.2 - 0.35 Nm	317			● ● ●
RE 13, 3 W	172					40.6 40.6 40.6
RE 13, 3 W	173					43.0 43.0 43.0
RE 13, 3 W	173	GP 13, 0.05 - 0.15 Nm	316			● ● ●
RE 13, 3 W	173	GP 13, 0.2 - 0.35 Nm	317			● ● ●
RE-max 13, 0.75 W	220					25.2 25.2 25.2
RE-max 13, 0.75 W	220	GP 13, 0.05 - 0.15 Nm	316			● ● ●
RE-max 13, 0.75 W	220	GP 13, 0.2 - 0.35 Nm	317			● ● ●
RE-max 13, 2 W	222					36.2 36.2 36.2
RE-max 13, 2 W	222	GP 13, 0.05 - 0.15 Nm	316			● ● ●
RE-max 13, 2 W	222	GP 13, 0.2 - 0.35 Nm	317			● ● ●

Technical Data

Supply voltage V_{CC}	5 V \pm 5%
Output signal	TTL compatible
Phase shift Φ	90°e \pm 45°e
Operating temperature range	-25...+85 °C
Moment of inertia of code wheel	\leq 0.005 gcm ²
Output current per channel	max. 5 mA

Pin Allocation



- 1 Motor +
 - 2 V_{CC}
 - 3 Channel A
 - 4 Channel B
 - 5 GND
 - 6 Motor -
 - 7 N.C.
 - 8 GND
 - 9 GND
- DIN Connector 41651/
EN 60603-13
flat band cable AWG 28

Connection example

