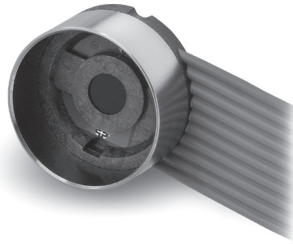
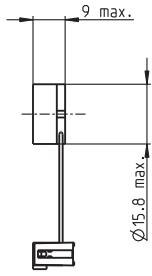
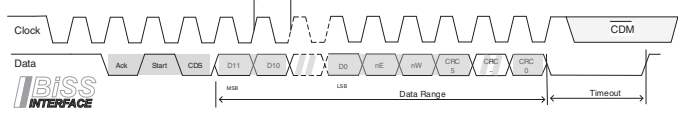


# Encoder 16 EASY Absolute 4096 steps, Single Turn



## BiSS-C



## SSI

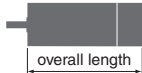


Angle values increase when direction of rotation is cw (definition of 'cw' on p. 150)

Part numbers	
488783	488782

- Stock program
- Standard program
- Special program (on request)

Type (provisional)	488783	488782
Steps per turn	4096	4096
Resolution (bit single turn)	12	12
Signal protocol	BiSS-C	SSI
Max. mech. speed (rpm)	30000	30000
Data encoding	Binary	Gray Symmetric
Min. clock frequency CLK (MHz)	0.6	0.04
Max. clock frequency CLK (MHz)	10	4
Timeout (µs)	2	16



maxon modular system						Total length [mm]	
+ Motor	Page	+ Electronics	Page	+ Accessories*			
EC-i 40, 50 W	281/282					37.7	37.7
EC-i 40, 50 W	281/282	EPOS2 50/5	425	Signal Cable J5	300586	•	•
EC-i 40, 50 W	281/282	EPOS2 70/10	425	Signal Cable J5B	378173	•	•
EC-i 40, 50 W	281/282	MAXPOS 50/5	435	Sensor Cable X6	451290	•	•
EC-i 40, 70 W	283/284					47.7	47.7
EC-i 40, 70 W	283/284	EPOS2 50/5	425	Signal Cable J5	300586	•	•
EC-i 40, 70 W	283/284	EPOS2 70/10	425	Signal Cable J5B	378173	•	•
EC-i 40, 70 W	283/284	MAXPOS 50/5	435	Sensor Cable X6	451290	•	•
EC-i 40, 100 W	285					67.7	67.7
EC-i 40, 100 W	285	EPOS2 50/5	425	Signal Cable J5	300586	•	•
EC-i 40, 100 W	285	EPOS2 70/10	425	Signal Cable J5B	378173	•	•
EC-i 40, 100 W	285	MAXPOS 50/5	435	Sensor Cable X6	451290	•	•
EC-i 52, 180 W	286					93.7	93.7
EC-i 52, 180 W	286	EPOS2 70/10	425	Signal Cable J5B	378173	•	•
EC-i 52, 180 W	286	MAXPOS 50/5	435	Sensor Cable X6	451290	•	•

\* + Adapter EASY Absolute 488167 (required for all maxon controllers)

Technical data	
Supply voltage $V_{CC}$	5 V ± 10%
Output signal	CMOS compatible
Output current, data	max. 20 mA
Current draw, typ. (no load)	17 mA
Setup time after Power On	max. 4 ms
Hysteresis	0.17° mech
Moment of inertia of code wheel	≤ 0.09 gcm <sup>2</sup>
Operating temperature range	-40...+100 °C
The angle value 0 is matched to the commutation phase of winding 1 (in acc. with Hall 1 signal on motors with Hall sensors, block commutation), see p. 34.	
Additional information can be found under 'Downloads' in the maxon online shop.	

