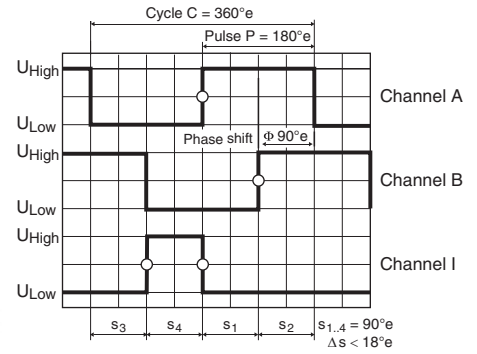
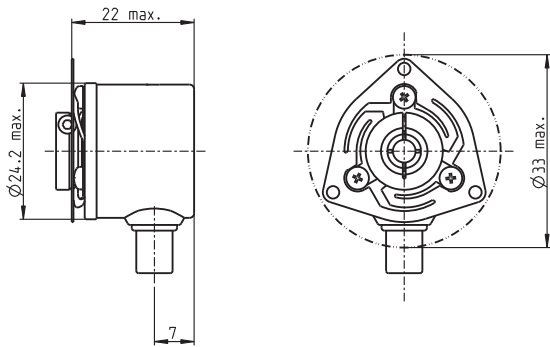


Encoder 2RMHF 3000–5000 CPT, 3 Channels, with Line Driver RS 422

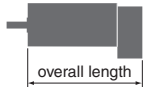


Direction of rotation cw (definition cw p. 150)

- Stock program
- Standard program
- Special program (on request)

Part Numbers					
461214	461216	461213	461215	X drives	

Type (provisional)	461214	461216	461213	461215	X drives
Counts per turn	3000	3000	5000	5000	3000–5000
Number of channels	3	3	3	3	3
Max. operating frequency (kHz)	200	200	200	200	200
Max. speed (rpm)	4000	4000	2400	2400	4000–2400
Shaft diameter (mm)	4	6	4	6	4

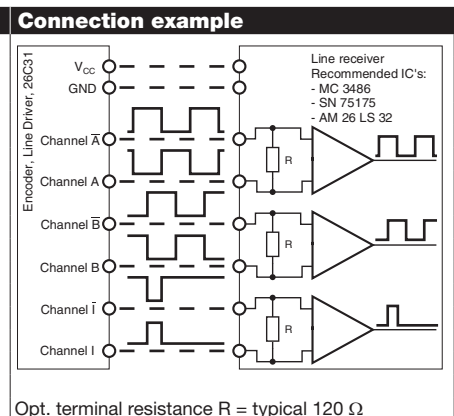
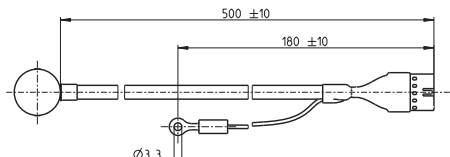


maxon Modular System						
+ Motor	Page	+ Gearhead	Page	+ Brake	Page	Overall length [mm] / ● see Gearhead
DCX 32 L	82					online
DCX 35 L	83					online
EC-4pole 30, 100 W 273						75.2 / 75.2
EC-4pole 30, 200 W 275						92.2 / 92.2
EC-i 40, 50 W	281/282					56.2 / 56.2
EC-i 40, 70 W	283/284					66.2 / 66.2
EC-i 40, 100 W	285					86.2 / 86.2

Technical Data	
Supply voltage V_{CC}	4.5 - 30 V
Output signal driver used:	EIA Standard RS 422 26C31
Operating temperature range	-40...+85 °C
Moment of inertia of code wheel	1.0 gcm ²
Output current per channel	± 30 mA
Phase shift ϕ	90°e ± 18°e
Index pulse width	90°e ± 18°e
Max. startup torque at 25 °C	< 5 mNm

Pin Allocation	
9	10
1	2

1	N.C.	DIN Connector	41651/EN 60603-13
2	V_{CC}		
3	GND		
4	N.C.	Ring terminal	Molex 19324-0002
5	Channel A		
6	Channel A		
7	Channel B		
8	Channel B		
9	Channel I (Index)		
10	Channel I (Index)		



The index signal I is synchronized with channel A or B.

Opt. terminal resistance R = typical 120 Ω