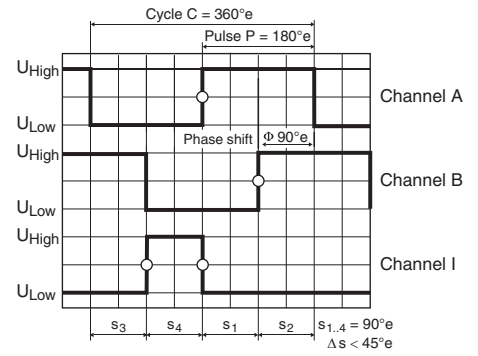
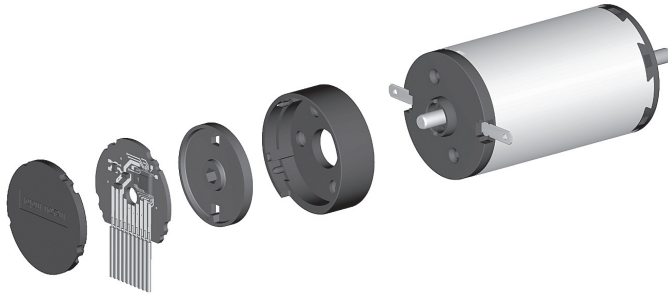


Encoder MR Type ML, 128–1000 CPT, 3 Channels, with Line Driver



Direction of rotation cw (definition cw p. 150)

- Stock program
- Standard program
- Special program (on request)

Part Numbers				
225771	225773	225778	225805	225780

Type						
Counts per turn		128	256	500	512	1000
Number of channels		3	3	3	3	3
Max. operating frequency (kHz)		80	160	200	320	200
Max. speed (rpm)		37 500	37 500	24 000	37 500	12 000



maxon Modular System						Overall length [mm] / ● see Gearhead				
+ Motor	Page	+ Gearhead	Page	+ Brake	Page					
RE 25	179/181					65.5	65.5	65.5	65.5	65.5
RE 25	179/181	GP 26, 0.75 - 2.0 Nm	336			●	●	●	●	●
RE 25	179/181	GP 32, 0.75 - 6.0 Nm	338-343			●	●	●	●	●
RE 25	179/181	KD 32, 1.0 - 4.5 Nm	347			●	●	●	●	●
RE 25	179/181	GP 32 S	370-372			●	●	●	●	●
RE 25, 20 W	180					54.0	54.0	54.0	54.0	54.0
RE 25, 20 W	180	GP 22, 0.5 Nm	329			●	●	●	●	●
RE 25, 20 W	180	GP 26, 0.75 - 2.0 Nm	336			●	●	●	●	●
RE 25, 20 W	180	GP 32, 0.75 - 6.0 Nm	338-343			●	●	●	●	●
RE 25, 20 W	180	KD 32, 1.0 - 4.5 Nm	347			●	●	●	●	●
RE 25, 20 W	180	GP 32 S	370-372			●	●	●	●	●
A-max 26	206-212					53.5	53.5	53.5	53.5	53.5
A-max 26	206-212	GP 26, 0.75 - 4.5 Nm	336			●	●	●	●	●
A-max 26	206-212	GS 30, 0.07 - 0.2 Nm	337			●	●	●	●	●
A-max 26	206-212	GP 32, 0.75 - 6.0 Nm	338-343			●	●	●	●	●
A-max 26	206-212	GS 38, 0.1 - 0.6 Nm	348			●	●	●	●	●
A-max 26	206-212	GP 32 S	370-372			●	●	●	●	●
RE-max 29	227-230					53.5	53.5	53.5	53.5	53.5
RE-max 29	227-230	GP 32, 0.75 - 6.0 Nm	339-343			●	●	●	●	●
RE-max 29	227-230	GP 32 S	370-372			●	●	●	●	●
EC-max 30, 40 W	264							54.2		54.2
EC-max 30, 40 W	264	GP 32, 1 - 8.0 Nm	343/345			●	●	●	●	●
EC-max 30, 40 W	264	KD 32, 1.0 - 4.5 Nm	347			●	●	●	●	●
EC-max 30, 40 W	264	GP 32 S	370-372			●	●	●	●	●
EC-max 30, 60 W	265							76.2		76.2
EC-max 30, 60 W	265	GP 32, 1 - 8.0 Nm	343/345			●	●	●	●	●
EC-max 30, 60 W	265	KD 32, 1.0 - 4.5 Nm	347			●	●	●	●	●
EC-max 30, 60 W	265	GP 42, 3 - 15 Nm	350			●	●	●	●	●
EC-4pole 30	273							59.2		59.2
EC-4pole 30	273	GP 32, 4.0 - 8.0 Nm	345			●	●	●	●	●
EC-4pole 30	273	GP 42, 3 - 15 Nm	350			●	●	●	●	●
EC-4pole 30	275							76.2		76.2
EC-4pole 30	275	GP 32, 4.0 - 8.0 Nm	345			●	●	●	●	●
EC-4pole 30	275	GP 42, 3 - 15 Nm	350			●	●	●	●	●

Technical Data	
Supply voltage V _{CC}	5 V ± 5%
Output signal	TTL compatible
Phase shift Φ	90°e ± 45°e
Index pulse width	90°e ± 45°e
Operating temperature range	-25...+85 °C
Moment of inertia of code wheel	≤ 0.7 gcm ²
Output current per channel	max. 5 mA

