

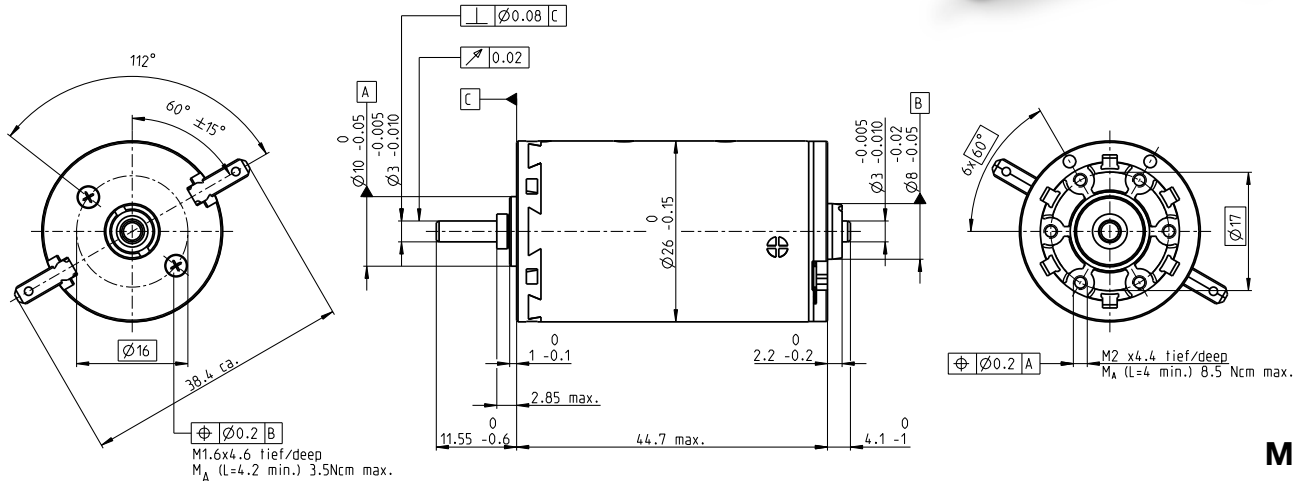
DC-max 26 Precious Metal Brushes

DC motor Ø26 mm

NEW



9/12 W 22.1 mNm 6700 rpm



M 1:1

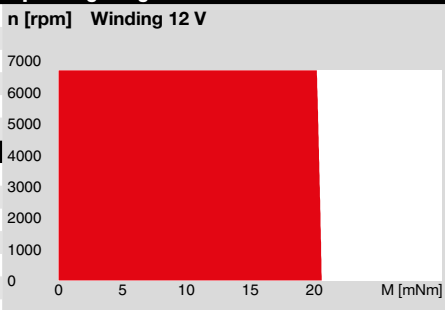
Motor Data

1_	Nominal voltage	V	6	12	24	48
2_	No load speed	rpm	4800	4410	4310	6130
3_	No load current	mA	37	16.2	7.85	6.79
4_	Nominal speed	rpm	4470	3790	3630	5460
5_	Nominal torque (max. continuous torque)	mNm	9.56	21.4	22.1	21.7
6_	Nominal current (max. continuous current)	A	0.840	0.84	0.425	0.297
7_	Stall torque	mNm	138.0	153	140	199
8_	Stall current	A	11.6	5.89	2.64	2.67
9_	Max. efficiency	%	89	90	90	90
10_	Terminal resistance	Ω	0.52	2.04	9.08	18.0
11_	Terminal inductance	mH	0.0613	0.292	1.22	2.41
12_	Torque constant	mNm/A	11.9	25.9	53.0	74.6
13_	Speed constant	rpm/V	803	368	180	128
14_	Speed/torque gradient	rpm/mNm	34.9	28.9	30.9	30.9
15_	Mechanical time constant	ms	5.38	4.84	4.92	4.92
16_	Rotor inertia	gcm ²	14.7	16.0	15.2	15.2

Thermal data

17_	Thermal resistance housing-ambient	K/W	24
18_	Thermal resistance winding-housing	K/W	4.73
19_	Thermal time constant winding	s	28.2
20_	Thermal time constant motor	s	636
21_	Ambient temperature	°C	-30...65
22_	Max. winding temperature	°C	85

Operating Range



Mechanical data ball bearings

23_	Max. speed	rpm	6700
24_	Axial play	mm	0.1...0.2
	Preload	N	0
25_	Radial play	mm	0.025
26_	Max. axial load (dynamic)	N	5
27_	Max. force for press fits (static) (static, shaft supported)	N	75
28_	Max. radial load [mm from flange]	N	1200

Mechanical data sleeve bearings

23_	Max. speed	rpm	6700
24_	Axial play	mm	0.1...0.2
	Preload	N	0
25_	Radial play	mm	0.012
26_	Max. axial load (dynamic)	N	1.7
27_	Max. force for press fits (static) (static, shaft supported)	N	80
28_	Max. radial load [mm from flange]	N	1200

Other specifications

29_	Number of pole pairs		1
30_	Number of commutator segments		13
31_	Weight of motor	g	120

maxon Modular System

maxon gear	Stages	maxon sensor	maxon motor control
134_GPX 26 A/C	1-2	146_ENX 10 QUAD	416_ESCON Module 24/2
135_GPX 26 LN/LZ	1-2	147_ENX 16 EASY	416_ESCON 36/2 DC
137_GPX 32 A/C	3	148_ENX 16 EASY Abs.	417_ESCON Module 50/5
138_GPX 32 LN/LZ	3		418_ESCON 50/5
			424_EPOS2 24/2 (DC/EC)
			424_EPOS2 Module 36/2
			425_EPOS2 50/5
			435_MAXPOS 50/5

Configuration

Bearing: Sleeve bearings/ball bearings
 Commutation: Precious metal brushes with CLL/Graphite Brushes
 Shaft front/back: Length
 Electric connection: Terminals/cable